

GENERAL NOTES:

WHEREVER POSSIBLE ACCESSIBLE ROOMS WILL BE LOCATED ON THE GROUND FLOOR OF LODGES.

HOT WATER MUST BE REGULATED TO ENSURE THAT TEMPERATURE DOES NOT GO ABOVE 41°C.

A MINIMUM OF ONE ACCESSIBLE ROOM MUST BE PROVIDED FOR EVERY TWENTY ROOMS.

ALL DIMENSIONS ARE CLEAR DIMENSIONS (WALL TO WALL FINISH) DIMENSIONS SHOWN ARE FOR TYPICAL TIMBER FRAME OR METSEC CONSTRUCTIONS.

CONTRACTOR TO ALLOW FOR A SILICONE MASTIC SEALANT MAPEI, MAPESEL AC REF 111: SILVER GREY AT THE FOLLOWING ITEMS/JUNCTIONS: COLOUR SUBJECT TO APPROVAL BY EMPLOYERS/TENANTS AGENT

DESK/PARTITION

DRAWING NOTES:

- (1.01) BEDHEAD, LIT FROM WITHIN WITH FLUORESCENT LIGHT FITTINGS.
- (1.02) MIRROR.
- (1.03) ZIP AND LINK BED.
- (1.04) SHEER CURTAIN (SITE SPECIFIC).
- (1.05) ROLLER BLIND.
- (1.06) HANGING SPACE.
- (1.07) MIRROR WITH INTEGRAL WALL LIGHT ABOVE.

- (1.08) VENEERED DESK.
- (1.09) 'GUBBIO' CHAIR.
- (1.10) WALL MOUNTED VENEERED PANEL WITH PRE-FITTED TELEVISION BRACKET.
- (1.11) ELECTRIC PANEL HEATER
- (1.12) FLOOR MOUNTED DOOR STOP.
- (1.13) WASH HAND BASIN.
- (1.14) LOW VOLTAGE LIGHT.

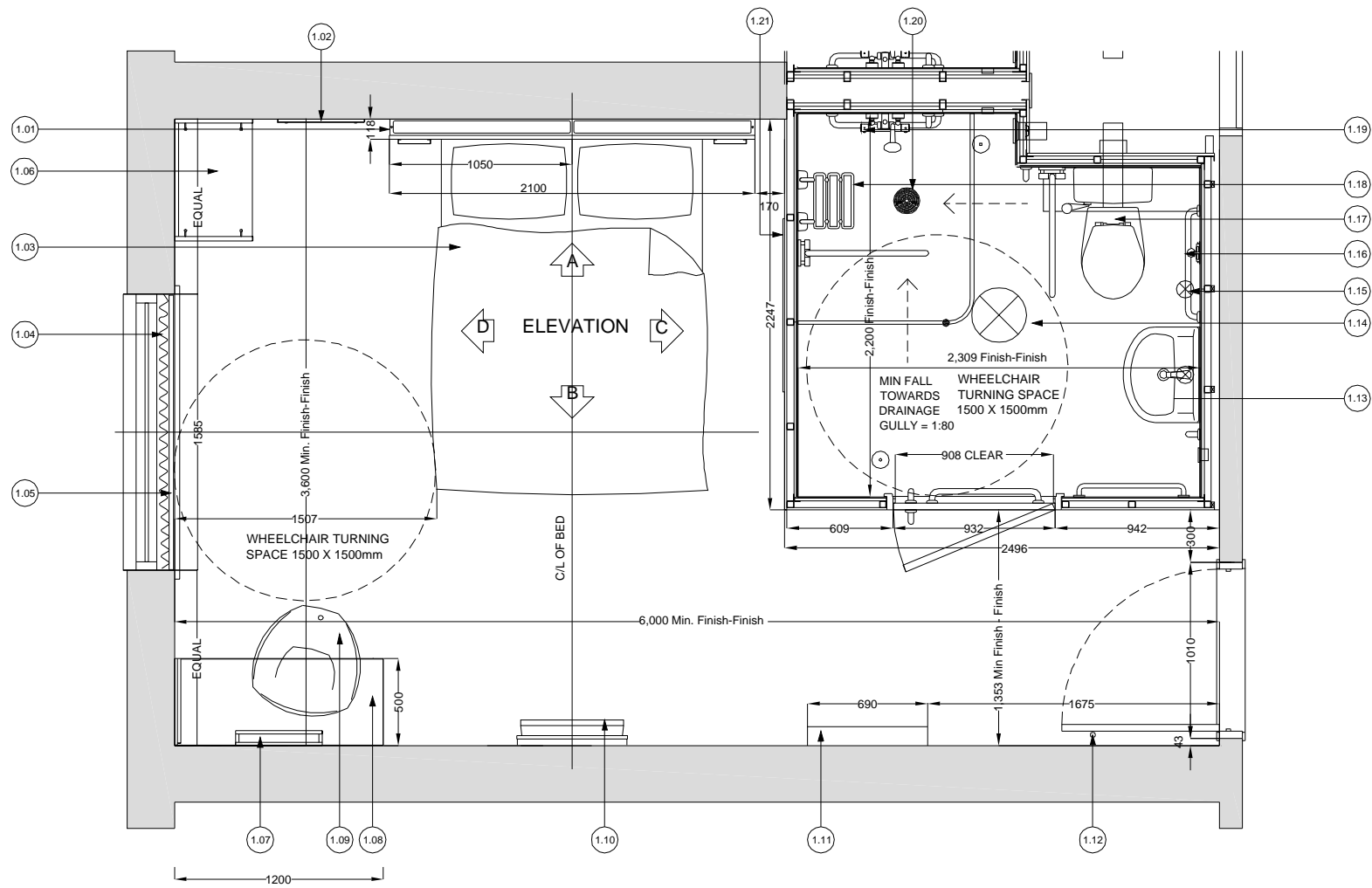
- (1.15) GRAB RAIL.
- (1.16) TOILET ROLL HOLDER.
- (1.17) WC WITH WALL MOUNTED CISTERN.
- (1.18) SHOWER SEAT.
- (1.19) SHOWER VALVE.
- (1.20) SHOWER GULLY TO BE 'WADE K2307' 150mm Ø S/STEEL GRILLE FOR VINYL FLOORING WITH 'WADE G202' CAST IRON GULLY (SUBJECT TO SITE CONDITIONS)
- (1.21) PICTURE.



CONTENTS: ACCESSIBLE ROOM - SETTING OUT AND FIXTURES.

FEBRUARY 2007

BD - 021 REV B



Please Note:
 This page is intended for visual reference only. Drawings are not to scale. All dimensions are in mm. All dimensions are to be checked on site prior to commencing work. Any discrepancy found between information given on this drawing and that given elsewhere or recorded on site shall be notified immediately to the Employers/Tenants agent in writing.